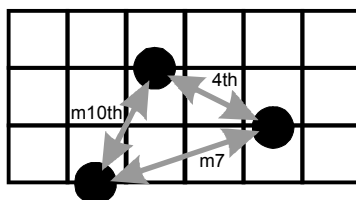


"GRIP" #1

Fingering

Fingerboard

3
2
1



| Built on scale tone | Chord tones | Chord Quality | Scale and Mode | |
|----------------------------|-------------------------------------|---|---|--|
| Δ7th #5th | Δ7, 9, 13 #5, #11, Δ7 | major only major only | C major A melodic minor (C whole tone-diminished) | |
| b7th b3rd (#9th) | b7, b9, #5 #9, #11, root | dominant (alt) dominant (b9 or alt) | D \flat melodic minor (C diminished-whole tone) C half step-whole step | |
| 6th (13th) 3rd #11th | 6, root, 5 3, 5, 9 #11, 13, 3 | major or dominant major or dominant major or dominant | MAJOR C major C major G major, or A mel min | DOMINANT F major, or G mel min F major G mel min |
| 5th | 5, b7, sus4 | sus | F major | |
| root | root, b7, b3 | minor seventh | B \flat major (C Dorian) | |
| root | root, b7, b3 | half diminished | D \flat maj, or E \flat mel min, or D \flat mel min | |

Chord
Quality

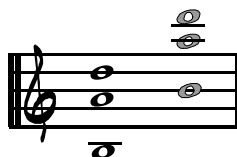
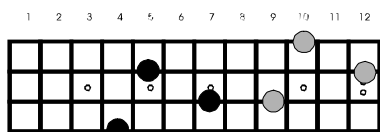
Fingerboard

Notation

Chord
Tones

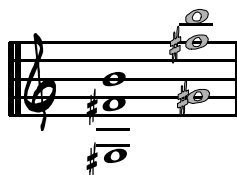
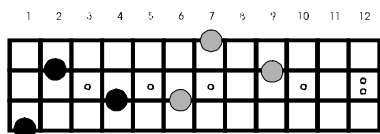
Chord
Symbol

Major



9th
6th (13th)
Δ7th

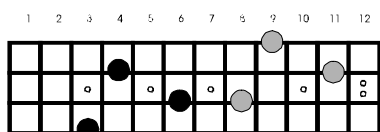
C Δ or C 6



Δ7th
#11th
#5th

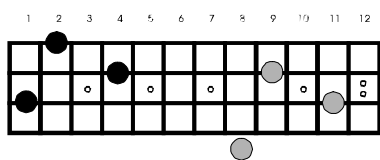
C Δ (#5)

Dominant



b9th
#5th
7th

C $^{\text{ALT}}$



#11th
b9th
#9th

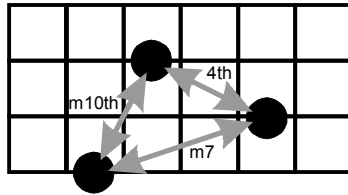
C 7 (b9) or C 7 (#9) or C $^{\text{DIM}}$

GRIP #1, pg2

Fingering

Fingerboard

3
2
1



Chord Quality

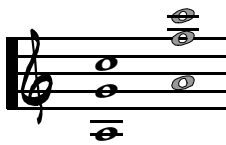
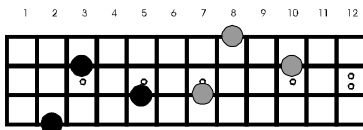
Fingerboard

Notation

Chord Tones

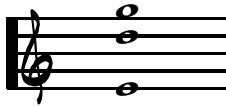
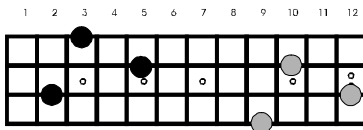
Chord Symbol

Major or Dominant



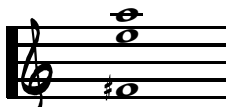
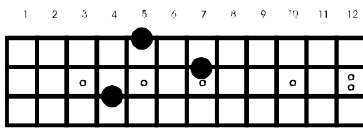
root
5th
6th (13th)

maj
C^{ADD 6} C^{dom 13}



5th
9th
3rd

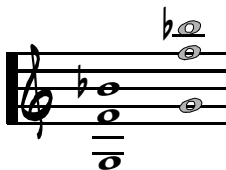
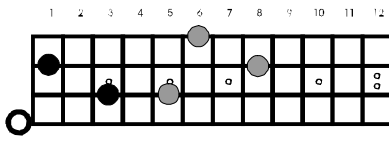
C^{Δ9} C⁹



13th
3rd
#11th

C^{Δ13} C¹³

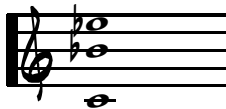
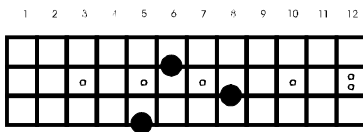
Sus



b7th
4th
5th

C^{SUS}

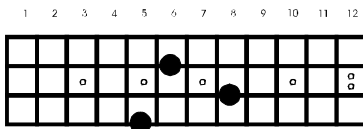
Minor Seventh



b3rd
b7th
root

C^{M7}

Half-Diminished (minor seventh, flat five)



b3rd
b7th
root

C^{M7(b5)} or C^ø